

SL144 Reader
Data Output Format

Version 2.0
Aug 2019
StrongLink

Data output format detailed description

RS232 and RJ-45 data output format

- **Simplified data output format (Terse)**

Adopt text format., Data consist of 『read times, antenna number and tag type and tag ID』. For example:

4, 1, 4, 1115 F268 81C3 C012

6, 1, 4, 0100 0100 0002 0709

Antenna number: 1 mean antenna1 read; 2 mean antenna 2 read; 4 mean antenna3 read; 8 mean antenna 4 read; 6 mean antenna 2 and antenna 3 read.. other values analogy, below defination are same.

Tag type: 01H, 01H-ISO18000-6B, 02H-EPCC1, 04H-EPCC1G2, 08H-EM4442. 03H represent Simultaneously read ISO18000-6B and EPCC1. And so on

- **Standard data output format (Standard)**

Adopt text format. Data consist of 『first read time, last read time, read times, antenna number, tag type and tag ID』 eg.

Disc:2003/01/21 09:00:51, Last:2003/01/21 09:00:51, Count:4, Ant:1, Type:4, Tag:1115 F268 81C3 C012

Disc:2003/01/21 11:00:10, Last:2003/01/21 11:00:10, Count:6, Ant:1, Type:4, Tag:0100 0100 0002 0709

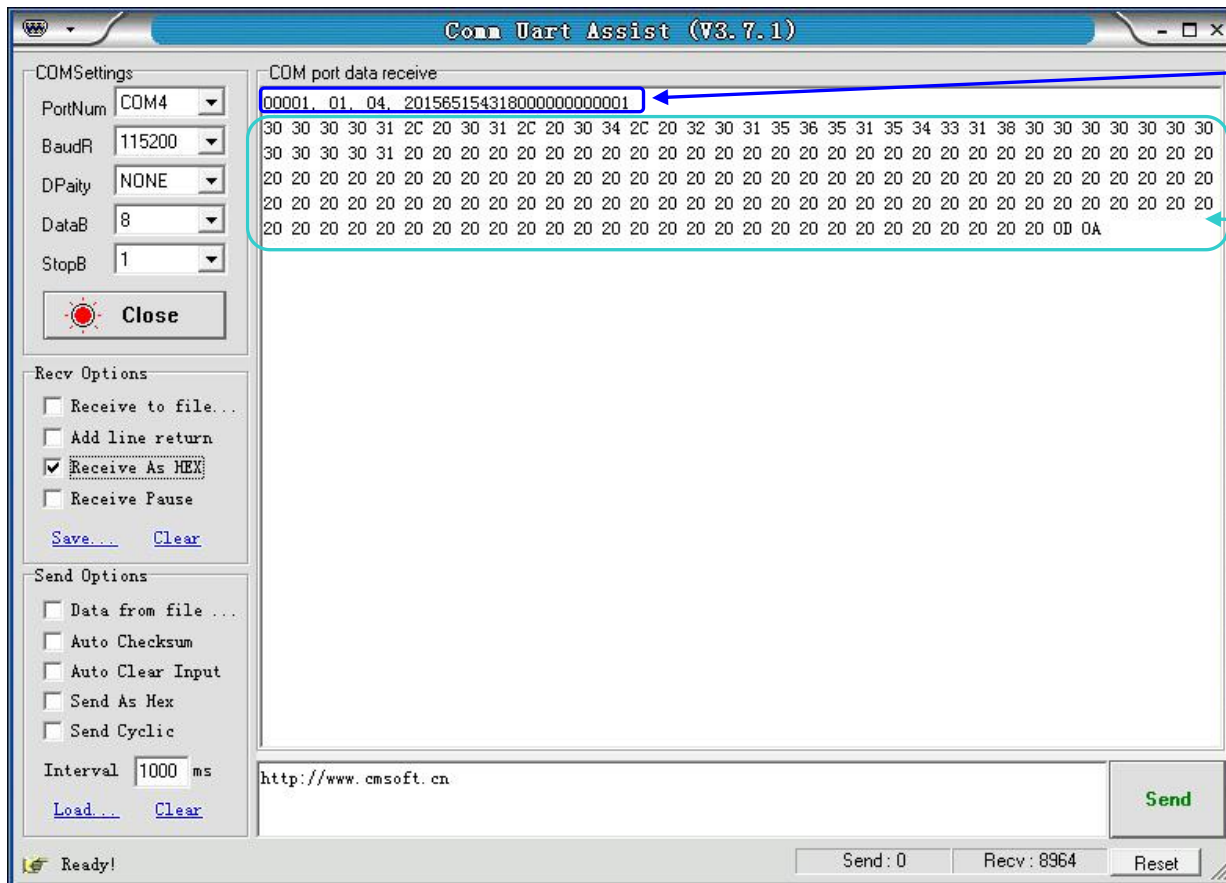
Simplified output mode test

Reader Settings

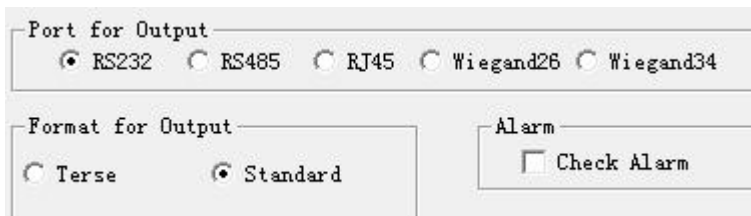
The screenshot shows a 'Reader Settings' window with three sections:

- Port for Output:** A group box containing five radio buttons: RS232 (selected), RS485, RJ45, Wiegand26, and Wiegand34.
- Format for Output:** A group box containing two radio buttons: Terse (selected) and Standard.
- Alarm:** A group box containing a checkbox labeled 'Check Alarm', which is currently unchecked.

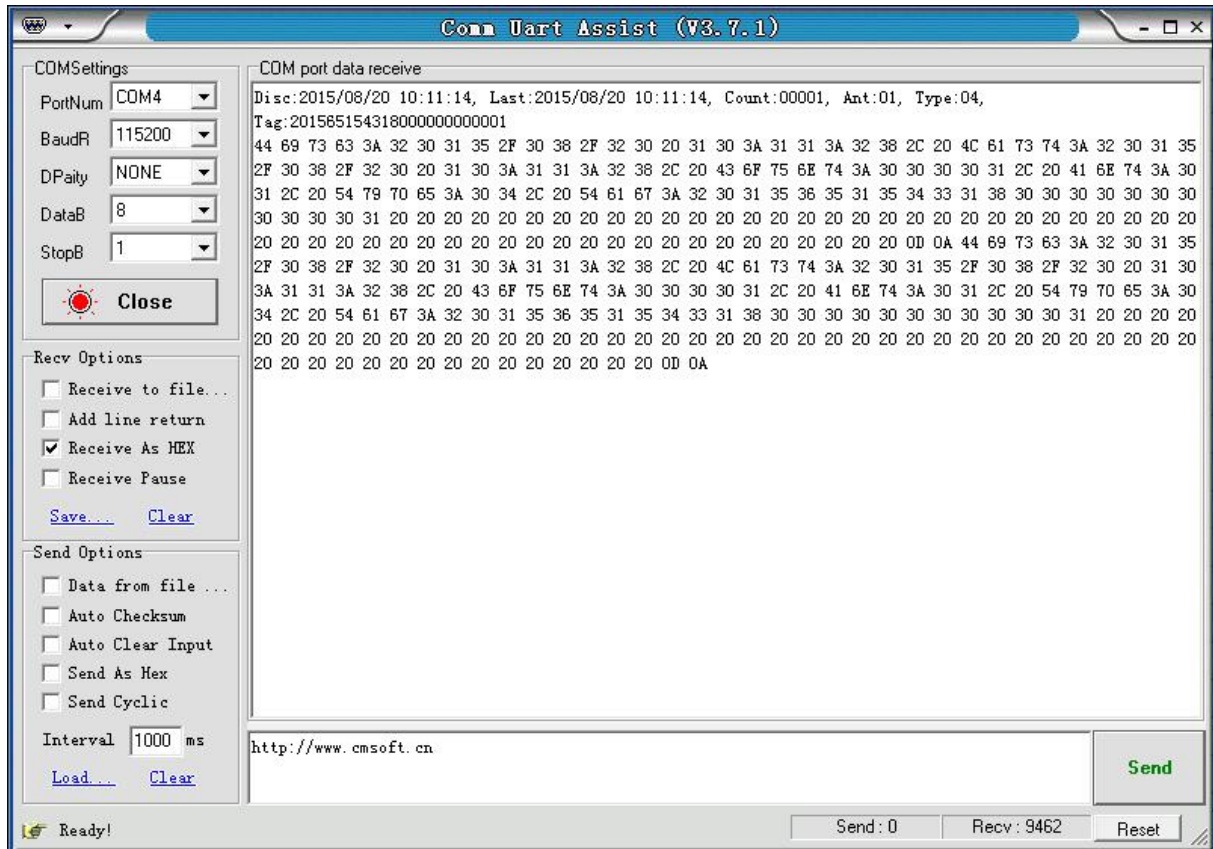
Serial Tools receive tag ID from reader, same tag ID data display text and hexadecimal below.



Standard output mode test
Reader Settings



Serial Tools receive tag ID from reader, same tag ID data display text and hexadecimal below:



ASCII Table

Dec	Hx	Oct	Chr	Dec	Hx	Oct	Chr	Dec	Hx	Oct	Chr	Dec	Hx	Oct	Chr
0	0	000	NUL (null)	32	20	040	Space	64	40	100	@	96	60	140	`
1	1	001	SOH (start of heading)	33	21	041	!	65	41	101	A	97	61	141	a
2	2	002	STX (start of text)	34	22	042	"	66	42	102	B	98	62	142	b
3	3	003	ETX (end of text)	35	23	043	#	67	43	103	C	99	63	143	c
4	4	004	EOT (end of transmission)	36	24	044	\$	68	44	104	D	100	64	144	d
5	5	005	ENQ (enquiry)	37	25	045	%	69	45	105	E	101	65	145	e
6	6	006	ACK (acknowledge)	38	26	046	&	70	46	106	F	102	66	146	f
7	7	007	BEL (bell)	39	27	047	'	71	47	107	G	103	67	147	g
8	8	010	BS (backspace)	40	28	050	(72	48	110	H	104	68	150	h
9	9	011	TAB (horizontal tab)	41	29	051)	73	49	111	I	105	69	151	i
10	A	012	LF (NL line feed, new line)	42	2A	052	*	74	4A	112	J	106	6A	152	j
11	B	013	VT (vertical tab)	43	2B	053	+	75	4B	113	K	107	6B	153	k
12	C	014	FF (NP form feed, new page)	44	2C	054	,	76	4C	114	L	108	6C	154	l
13	D	015	CR (carriage return)	45	2D	055	-	77	4D	115	M	109	6D	155	m
14	E	016	SO (shift out)	46	2E	056	.	78	4E	116	N	110	6E	156	n
15	F	017	SI (shift in)	47	2F	057	/	79	4F	117	O	111	6F	157	o
16	10	020	DLE (data link escape)	48	30	060	0	80	50	120	P	112	70	160	p
17	11	021	DC1 (device control 1)	49	31	061	1	81	51	121	Q	113	71	161	q
18	12	022	DC2 (device control 2)	50	32	062	2	82	52	122	R	114	72	162	r
19	13	023	DC3 (device control 3)	51	33	063	3	83	53	123	S	115	73	163	s
20	14	024	DC4 (device control 4)	52	34	064	4	84	54	124	T	116	74	164	t
21	15	025	NAK (negative acknowledge)	53	35	065	5	85	55	125	U	117	75	165	u
22	16	026	SYN (synchronous idle)	54	36	066	6	86	56	126	V	118	76	166	v
23	17	027	ETB (end of trans. block)	55	37	067	7	87	57	127	W	119	77	167	w
24	18	030	CAN (cancel)	56	38	070	8	88	58	130	X	120	78	170	x
25	19	031	EM (end of medium)	57	39	071	9	89	59	131	Y	121	79	171	y
26	1A	032	SUB (substitute)	58	3A	072	:	90	5A	132	Z	122	7A	172	z
27	1B	033	ESC (escape)	59	3B	073	;	91	5B	133	[123	7B	173	{
28	1C	034	FS (file separator)	60	3C	074	<	92	5C	134	\	124	7C	174	
29	1D	035	GS (group separator)	61	3D	075	=	93	5D	135]	125	7D	175	}
30	1E	036	RS (record separator)	62	3E	076	>	94	5E	136	^	126	7E	176	~
31	1F	037	US (unit separator)	63	3F	077	?	95	5F	137	_	127	7F	177	DEL