

# USB Mifare Reader



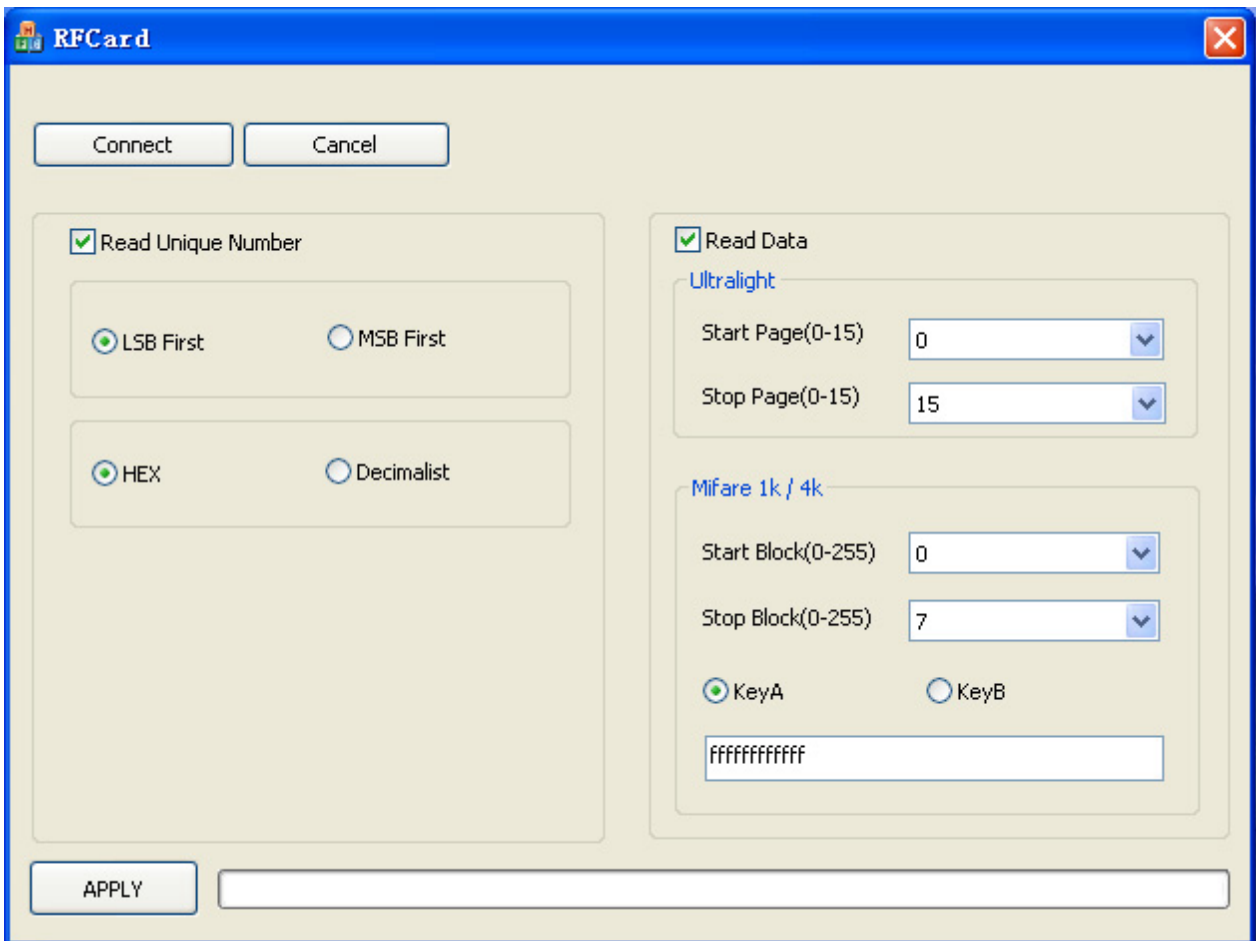
## MAIN FEATURES

- USB Keyboard Emulator, Plug and Play
- Frequency: 13.56MHz
- UID read supported: Mifare Mini, Mifare 1k, Mifare 4k, Mifare Plus, Ultralight, DesFire & Mifare\_ProX
- Data read supported: Mifare Mini, Mifare 1k, Mifare 4k and Ultralight
- Integrated antenna, LED and Buzzer
- Working current less than 80mA @5.0V
- Operating distance: Up to 60mm, depending on tag
- Storage temperature: -20 °C ~ +85 °C
- Operating temperature: -10 °C ~ +70 °C
- Dimension: 72 × 57 × 15 mm

## SETTING MODE

Switching SW1-1 to OFF position and repower, SL040A goto setting mode.

Run SL040Config.exe, RED-LED on SL040A will glitter.



- Read Unique Number
  - ◆ LSB First or HSB First
  - ◆ HEX or Decimalist

e.g. data stored in block0 of Mifare 1k as below sheet

BLOCK	0	1	2	3	4	5	6	7	8	9	10	11	12	13	14	15
0	01	02	03	04	04	88	04	00	47	C1	25	A8	45	00	31	06

If [LSB] and [HEX] selected, SL040A outputs 01020304

If [MSB] and [Decimalist] selected, SL040A outputs 0067305985

Remark: SL040A will append 0 in the front to keep all the output 10 digits number unified in DEC.

- Read Data

SL040A not only output the UID, can also read data from Ultalight, Mifare Mini, Mifare 1k and Mifare.

Remark: All blocks which to be read should be have same key.

## **WORKING MODE**

Switching SW1-1 to ON position and repower, SL040A run working mode. RED-LED on SL040A will light.

According to the config information stored in memory, SL040A will automatically read the unique serial number and data, then outputs to PC when Mifare tag in its detective range.

## **SW1**

SW1-1 OFF: setting mode

SW1-1 ON: working mode

SW1-2 OFF: output without "CR"

SW1-2 ON: output append postamble "CR"

## **LEDs**

RED-LED glitter: setting mode

RED-LED light: working mode

GREEN-LED light: tag in detective range

## **BUZZER**

When Mifare tag moved into detective range automatically beep.